

BETONSKA GALANTERIJA
CONCRETE ELEMENTS



povjerenje opravdano kvalitetom

SADRŽAJ . CONTENT

1. Uvod . introduction
2. **Proizvodni pogon** . production plant
3. **Ploče** . SLABS
- 4.-5. Opločnik **Šesterokut** . concrete paver HEXAGON
- 6.-15. Opločnik **Kocka** . concrete paver CUBE
- 16.-17. Opločnik **Pravokutnik** . concrete paver RECTANGLE
- 18.-19. Opločnik **Biskupska Kapa** . concrete paver BISHOP'S HAT
- 20.-21. Opločnik **H** . concrete paver H
- 22.-23. Opločnik **Travna Ploča** . concrete paver GRASS PLATE
24. Cestovni **rubnici . skošeni** . road curbs sloped
25. Parkovni **rubnici . ravni i skošeni** . park curbs flat and sloped
Rubnik slivnik . gutter curb
26. Parkovni **rubnici . zaobljeni i ravni** . park curbs rounded and flat
27. **Kanalice . konusna i ravna** . half round channels . conical and flat
28. **Kanalice . plitka i duboka** . half round channels . shallow and deep
29. **Stupovi . PP betonski stupovi . stupovi** . columns
prestressed concrete columns
30. - 31. **Betonske cijevi** . concrete tubes
32. **Betonski blokovi . Poklopci šahta** . concrete blocks . manhole covers
33. **AB prozori. Parkirne prepreke** . reinforced concrete windows . parking barriers
34. **VAŽNE UPUTE** . important instructions
31. **Bilješke** . notes



Poštovani !

Mogućnost uljepšavanja našeg životnog prostora potreba je svih ljudi. Posebnu pažnju posvećujemo vanjskim uređenjima objekata i tako se javlja želja za izborom kvalitetnog i pouzdanog poslovnog partnera koji nam svojim proizvodnim programom betonske galanterije takve želje može ostvariti.

Zagorje - Tehnobeton d.d. između velikog broja djelatnosti kojima se uspješno bavi u građevinarstvu želi potvrditi svoju kvalitetu i u proizvodnji betonske galanterije. Tradicija proizvodnje betonske galanterije koju imamo dugi niz godina, inspirirala nas je za ulaganjem u novo izgrađeni proizvodni pogon, tehnički i tehnološki moderan s ciljem sigurnog ostvarenja želja naših kupaca i investitora.

Umjetnošću polaganja kvalitetne betonske galanterije otvaraju se mogućnosti kreativnog ukrašavanja okoliša privatnih i poslovnih objekata, te javnih površina na zadovoljstvo i divljenje.

U našim novim prodajnim prostorima susresti ćete se sa širokim asortimanom proizvoda betonske galanterije (betonski opločnici, ploče, rubnjaci, kanalice, cijevi, poklopci, vinogradski stupovi, betonski blokovi) i bogatom paletom boja, kako biste, mnogobrojnim shemama polaganja iste, ukasili i kvalitetno osmislili vanjski prostor objekta koji Vam ostaje na korištenje i uživanje.

Nadamo se, da će Vas naš katalog inspirirati i vjerujemo da će izbor naše betonske galanterije zadovoljiti sve Vaše želje, te ih pretvoriti u stvarnost.

Dear!

The possibility to make living space beautiful is the need of all people. Our focus is put on the external decorating of the objects and that is the reason why we choose high quality and reliable business partner that can, with its concrete element production program, make our wishes come true.

Zagorje - Tehnobeton wants to confirm its quality in various activity in construction sector and that also considers its quality in production of concrete elements. Our tradition in production of concrete elements has inspired us to invest in new technically and technologically modern production plant, so that we can achieve the desires of our customers and investors.

Good quality of concrete elements opens up creative possibilities for environment decorating of private and public facilities.

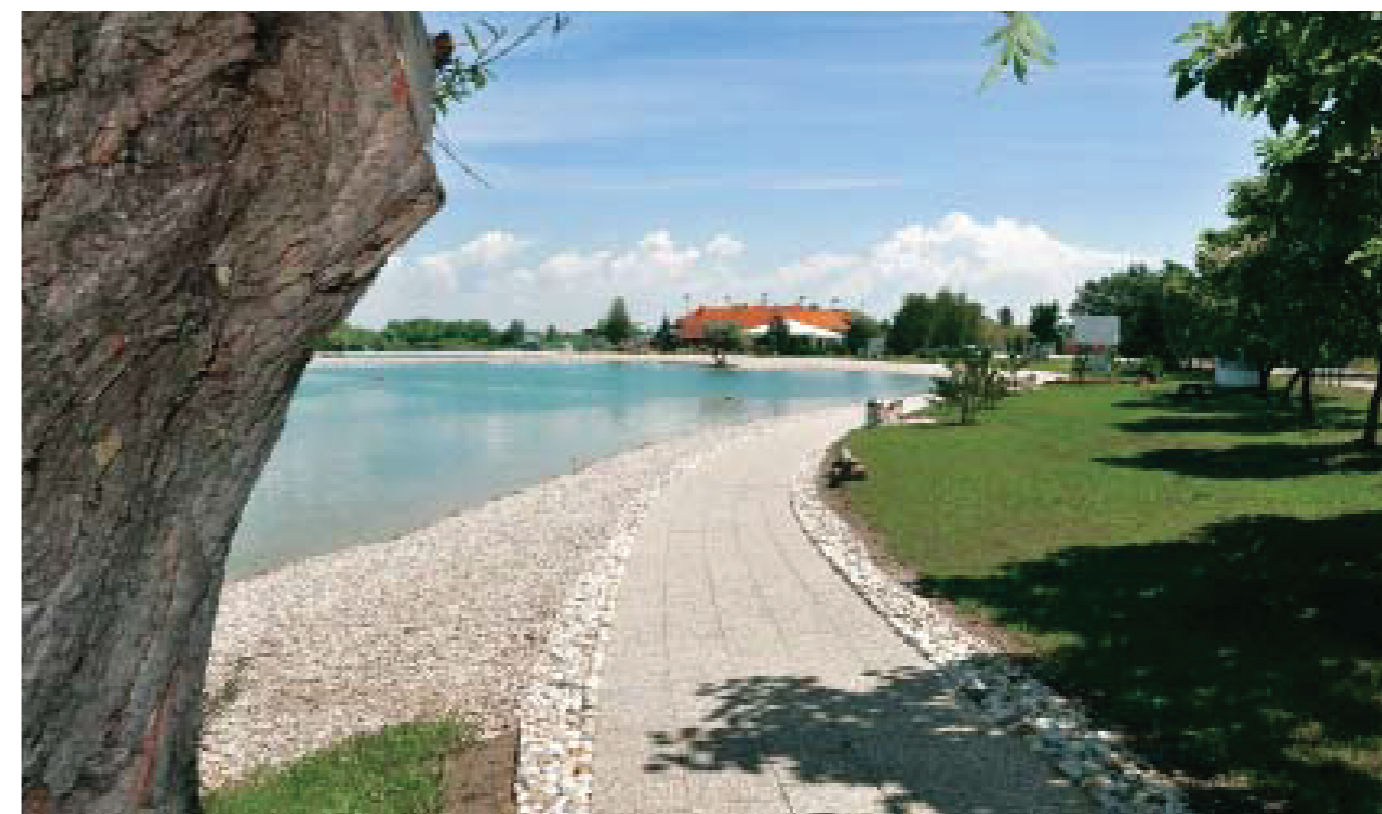
In our sale shop you can buy wide range of concrete elements in different colors (concrete pavers, plates, curbs, half rounded channels, concrete tubes, covers, vineyard poles, concrete blocks) for external decoration.

We hope our catalog will inspire you and that our concrete elements assortment will fulfill Your wishes so you can make them come true.



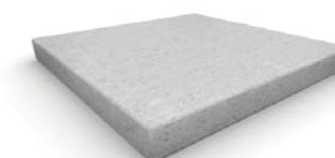
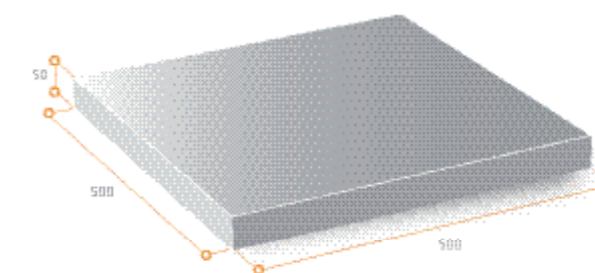
U pogonu se proizvodi betonska galanterija za potrebe gradilišta, kupaca i kooperanata u količinama od cca 90.000 m² opločnika, 100.000 kom betonskih blokova, 18.000 kom kanalice, 16.000 kom prednapregnutih betonskih stupova, 100.000 kom ploča, 200.000 kom rubnika i 33.000 komada cijevi i poklopaca na godinu.

For customers, constructors and building sites in the hall for production of concrete elements the company produce, approximately 90.000 m² of concrete pavers, 100.000 pieces of concrete blocks, 18.000 pieces of half rounded channels, 16.000 pieces of prestressed concrete piles, 100.000 pieces of plates, 200.000 pieces of curbs and 33.000 pieces of concrete tubes and covers per year.

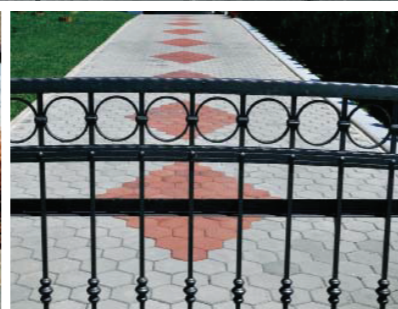
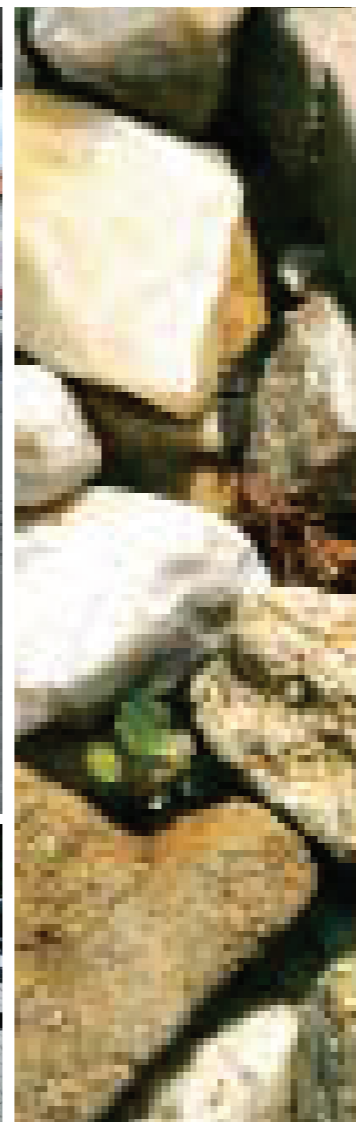


PLOČE . slabs

glatka . smooth surface concrete slab

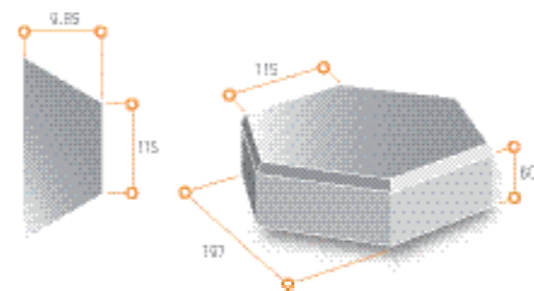
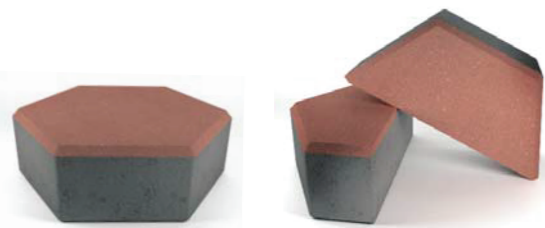


Dimenzije mm dimensions mm	kom/m ² piece/m ²	kg/m ² kg/m ²	m ² /paleta m ² /pallet	kg/paleta kg/pallet
400/400/50	6,25	119	11,52	1370
500/500/50	4	120	12	1440



OPLOČNIK ŠESTEROKUT . concrete paver HEXAGON

cijeli . whole concrete paver
završni . nal concrete paver



završne obrade . nish work



Dimenzije mm dimensions mm	kom/m ² piece/m ²	kg/m ² kg/m ²	m ² /paleta m ² /pallet	kg/paleta kg/pallet
197/115/60	30	137	10,5	1439

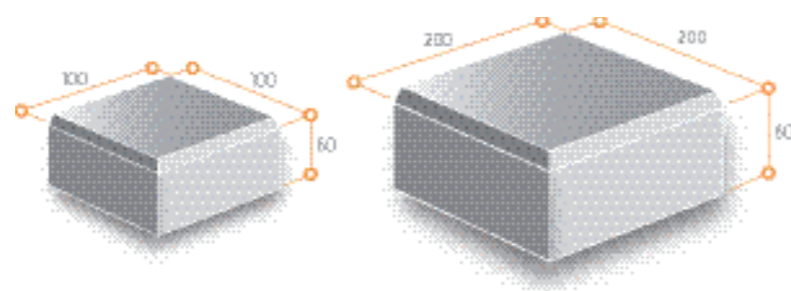




OPLOČNIK **KOCKA**. concrete paver CUBE 100 x 100 . 200 x 200 . 300 x 300



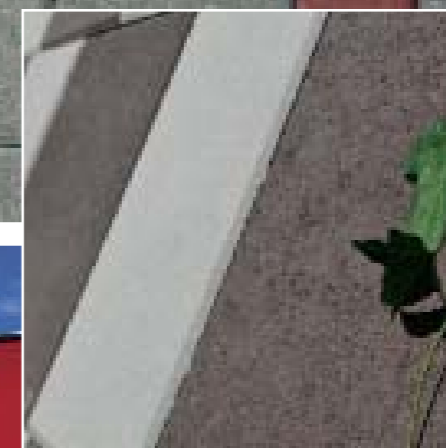
završne obrade . finish work

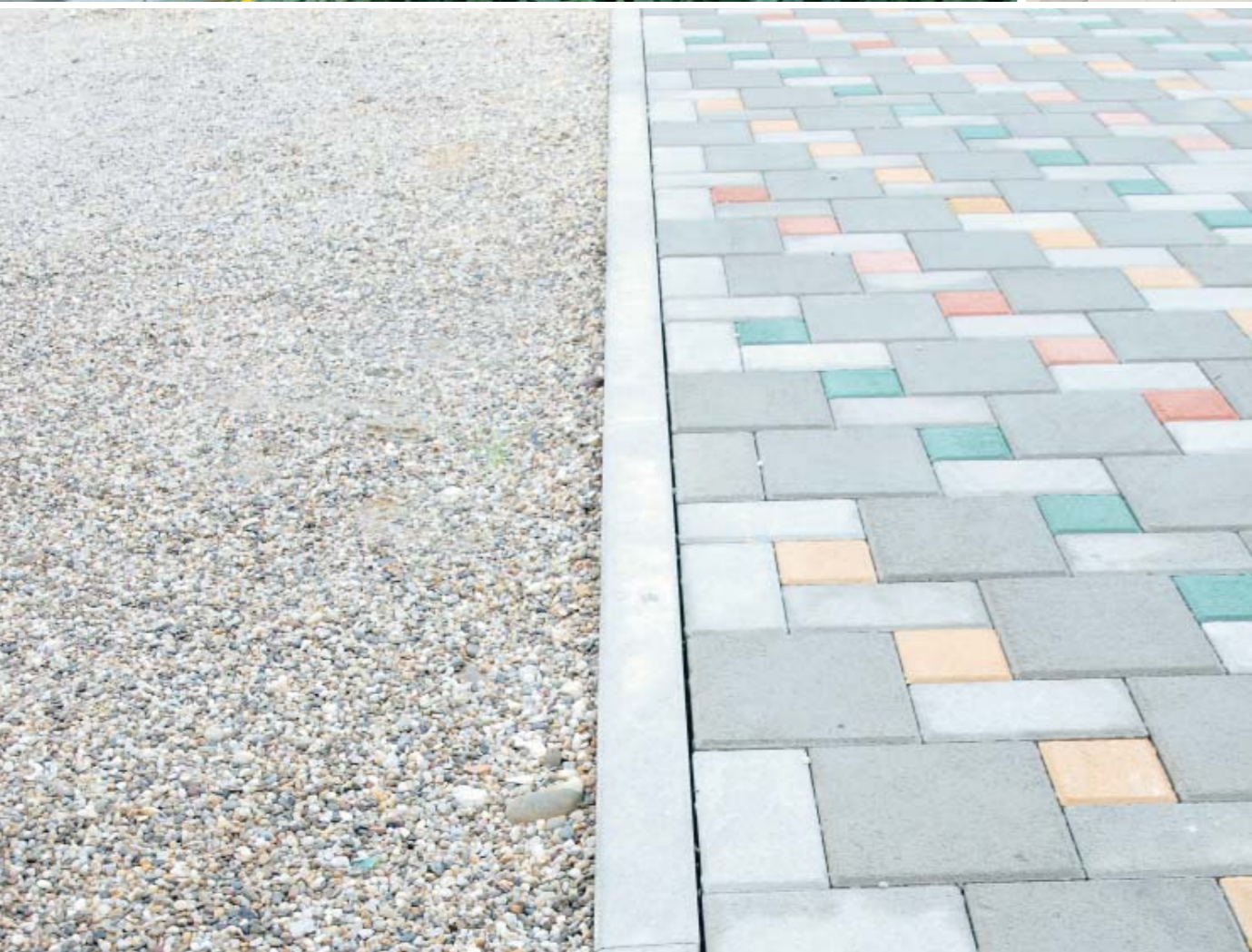


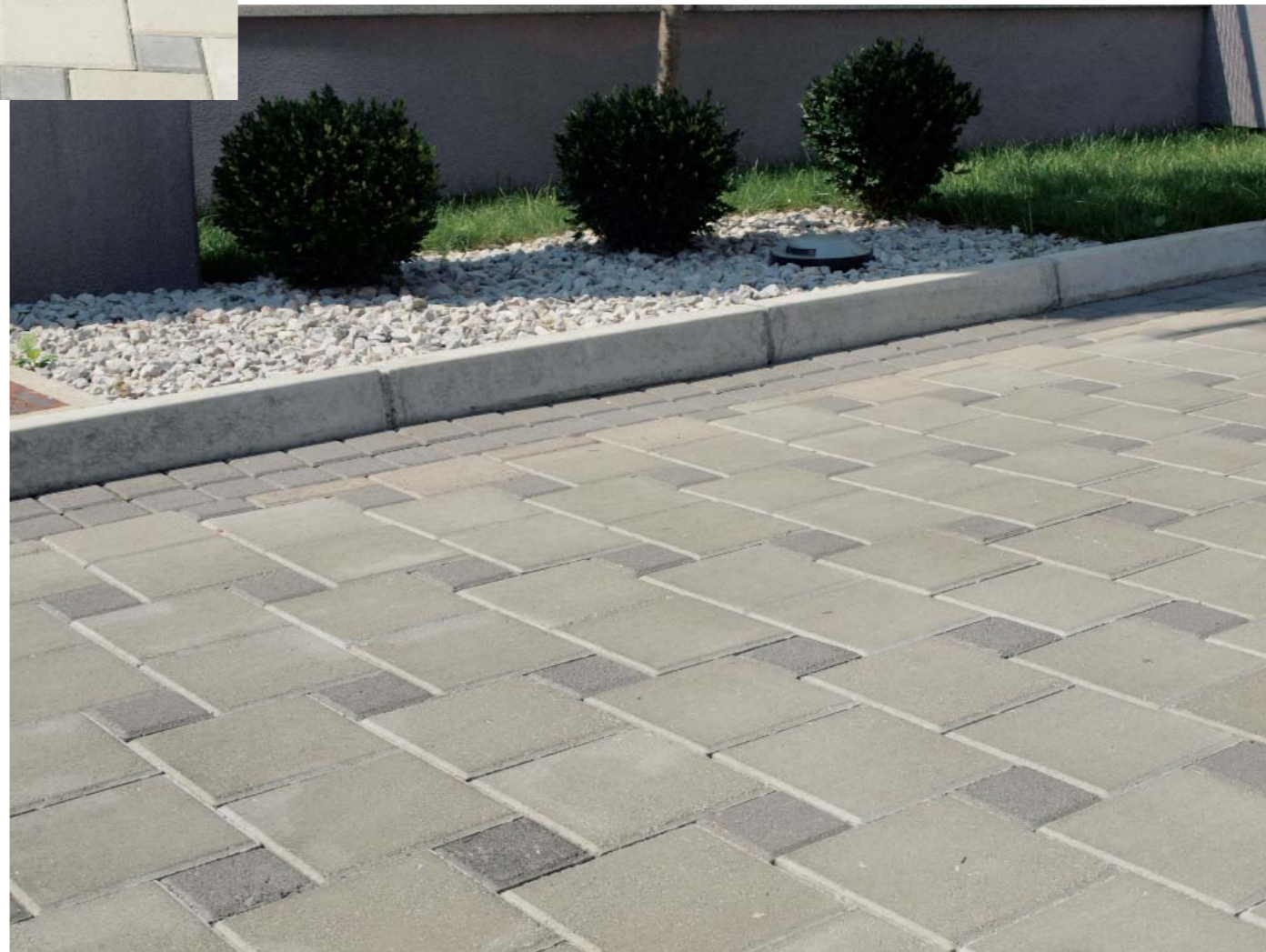
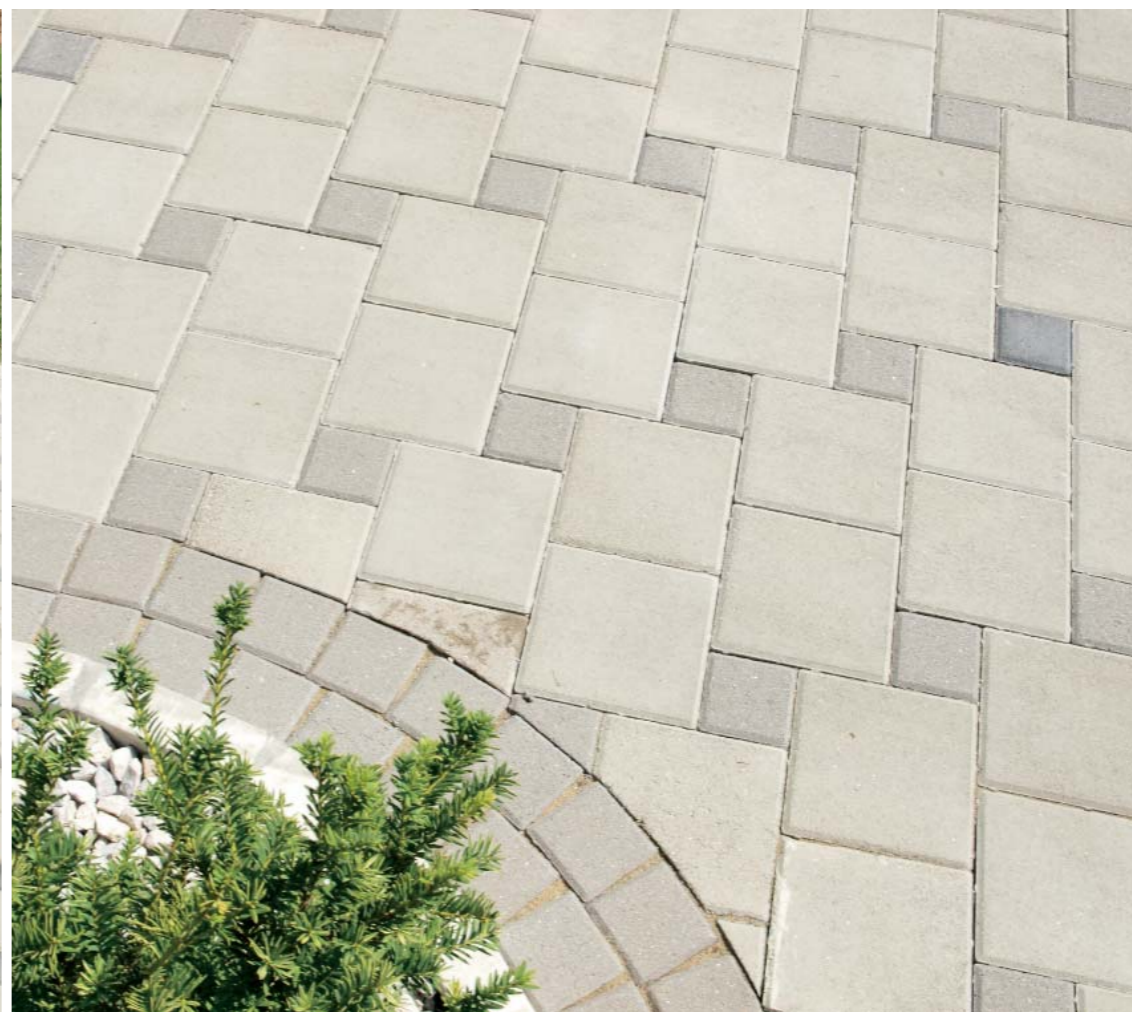
Dimenzije mm dimensions mm	kom/m ² piece/m ²	kg/m ² kg/m ²	m ² /paleta m ² /pallet	kg/paleta kg/pallet
100/100/60	100	127	10,56	1340
200/200/60	25	132	11,52	1520
300/300/60	11	136	10,9	1480

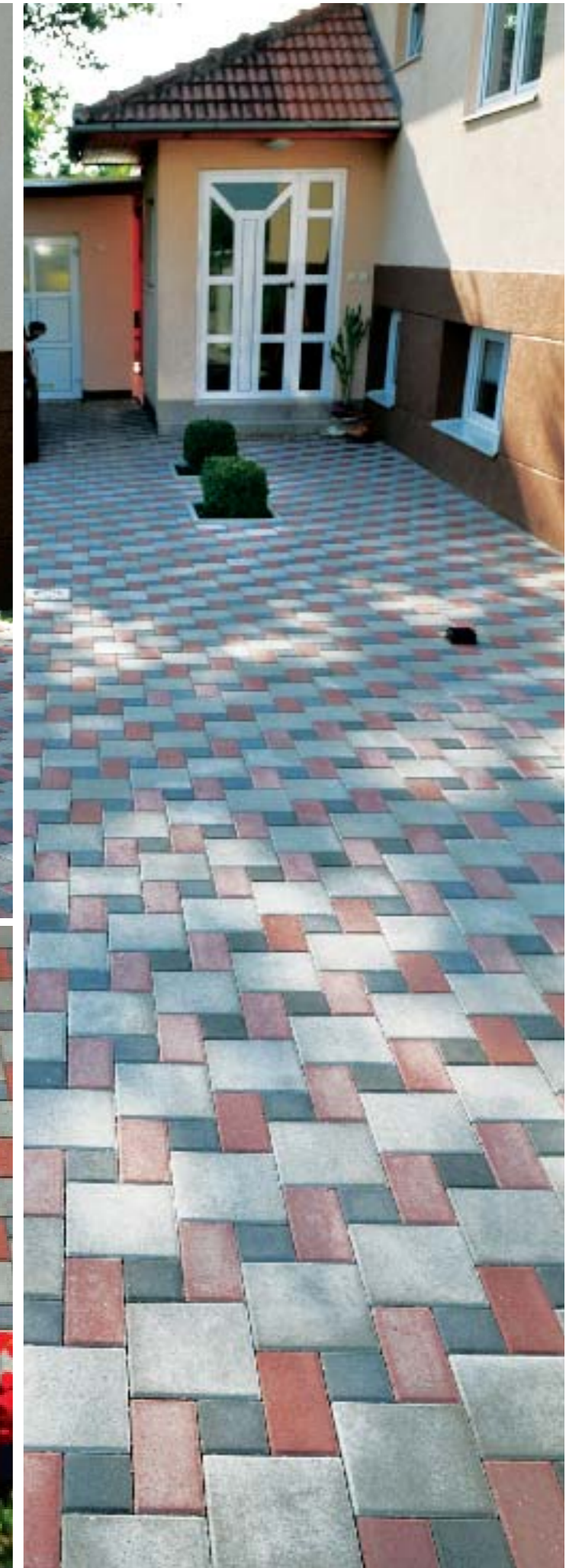
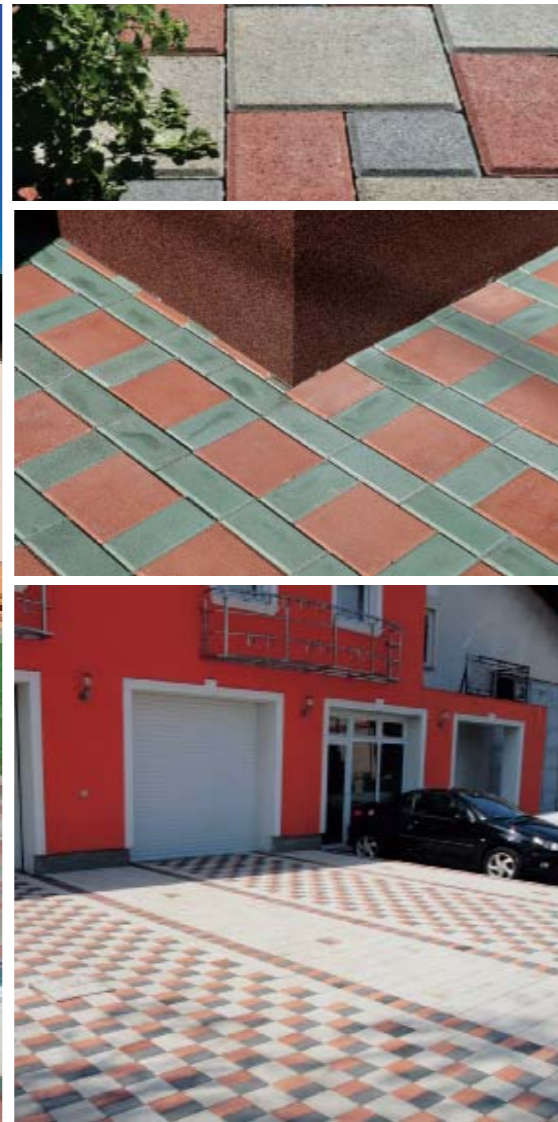




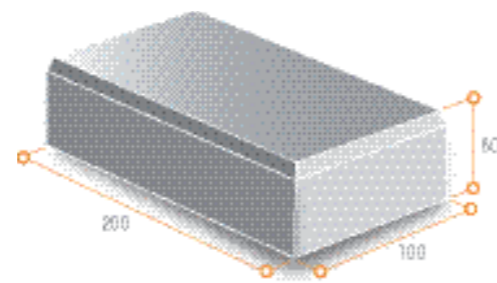








OPLOČNIK PRAVOKUTNIK . concrete paver RECTANGLE 100 x 200 . 200 x 300

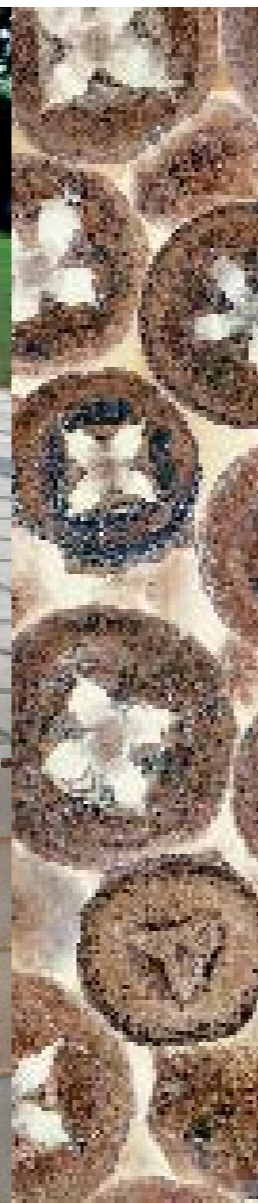


završne obrade . finish work



Dimenzije mm dimensions mm	kom/m ² piece/m ²	kg/m ² kg/m ²	m ² /paleta m ² /pallet	kg/paleta kg/pallet
100/200/60	50	138	11,52	1590
200/300/60	16,7	135	11,5	1550

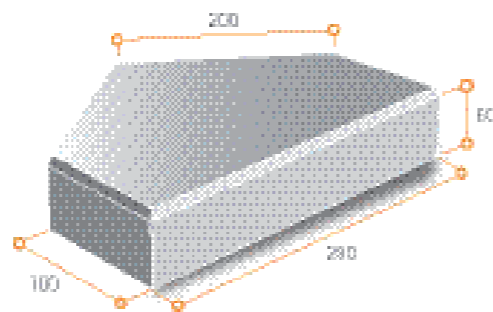




OPLOČNIK **BISKUPSKA KAPA** . concrete paver BISHOP'S HAT

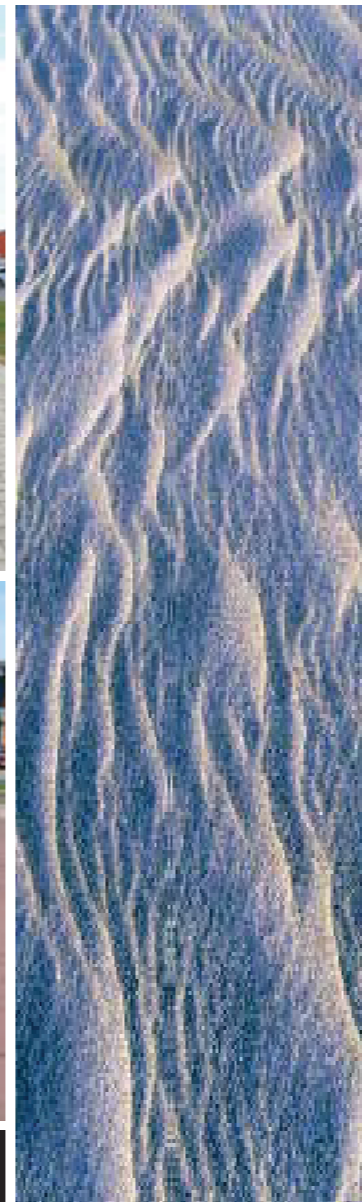
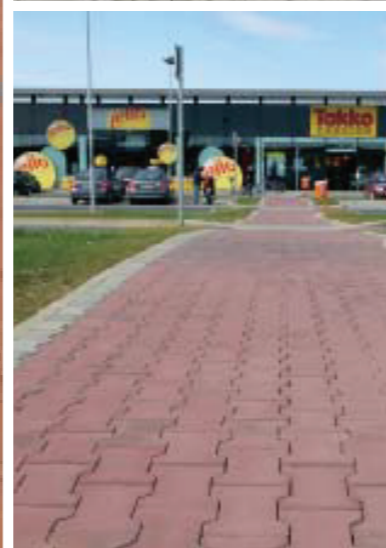


završne obrade . finish work



Dimenzije mm dimensions mm	kom/m ² piece/m ²	kg/m ² kg/m ²	m ² /paleta m ² /pallet	kg/paleta kg/pallet
280/100/200/60	21	137	10,29	1410



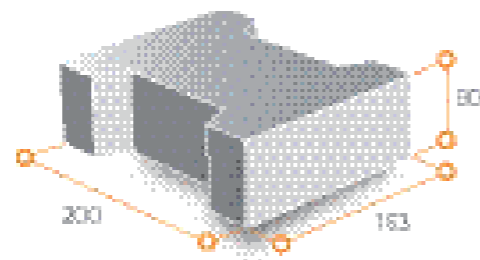


OPLOČNIK H . concrete paver H

završni i cijeli
nal and whole concrete paver



završne obrade . nish work

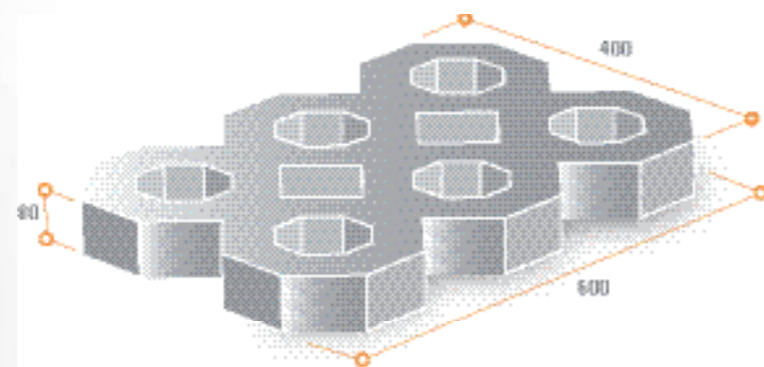
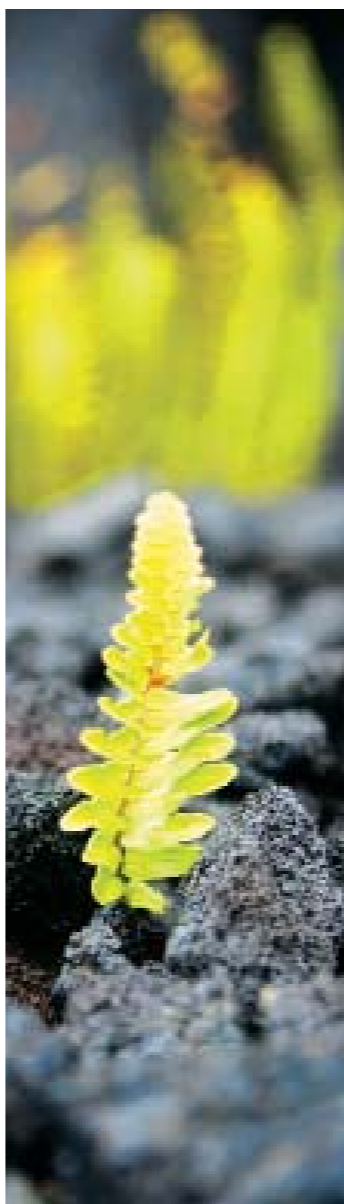


Dimenzije mm dimensions mm	kom/m ² piece/m ²	kg/m ² kg/m ²	m ² /paleta m ² /pallet	kg/paleta kg/pallet
200/163/80	35	169	9,43	1595

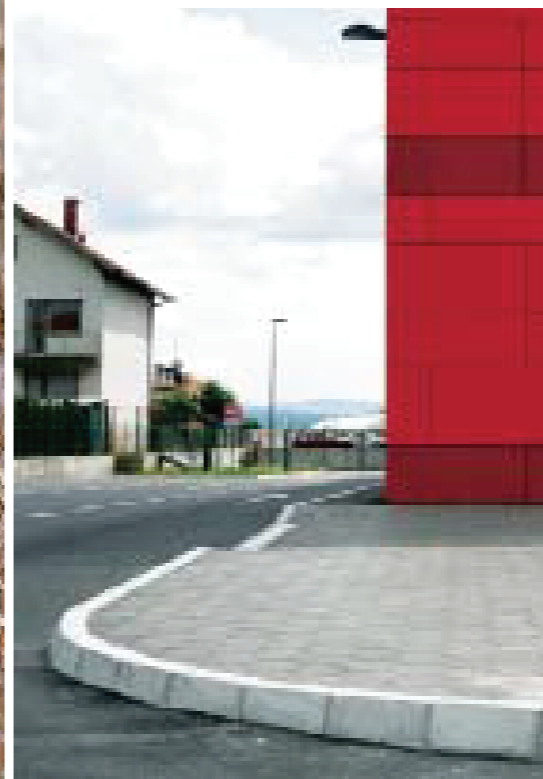
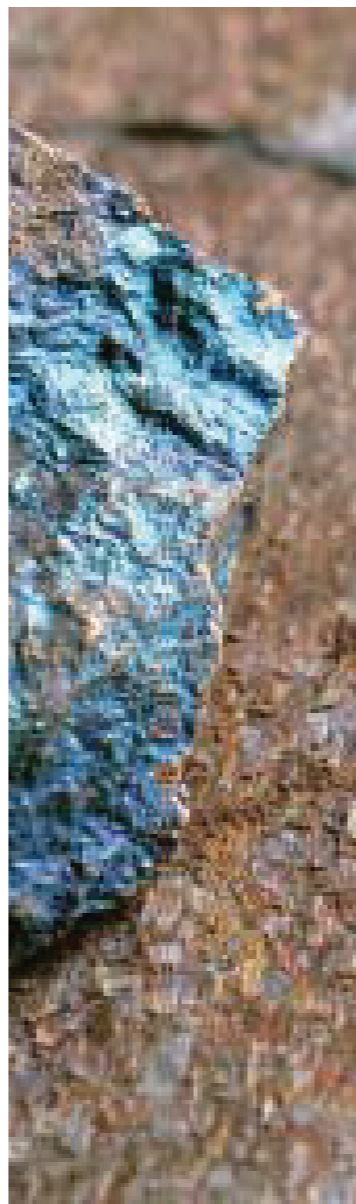
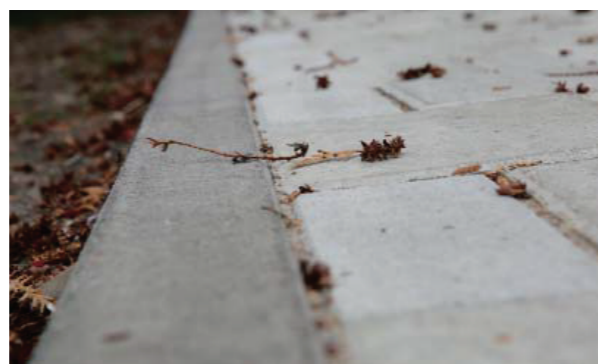




TRAVNA PLOČA . grass plate

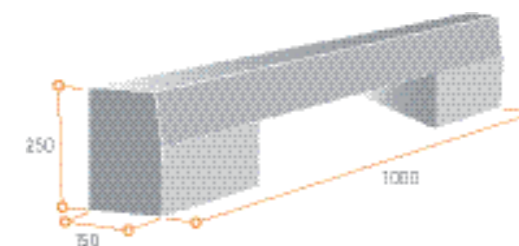


Dimenzije mm dimensions mm	kom/m ² piece/m ²	kg/m ² kg/m ²	m ² /paleta m ² /pallet	kg/paleta kg/pallet
600/400/80	4,17	114	9,6	1100



RUBNIK SLIVNIK
curb gutter

armirano betonski
reinforced concrete



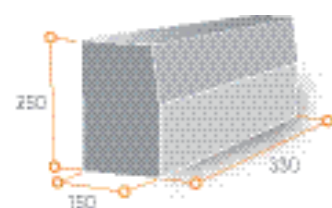
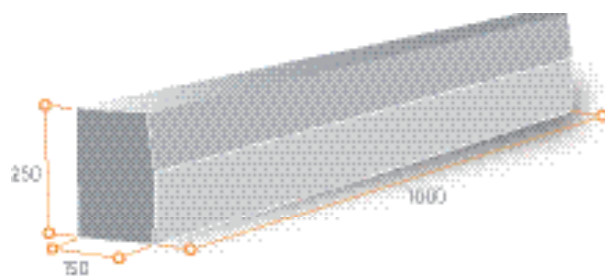
Dimenzije mm dimensions mm	Težina kg weight kg	kom/paleta piece/pallet	kg/paleta kg/pallet
150/250/1000	60	15	900

CESTOVNI RUBNICI . road curbs

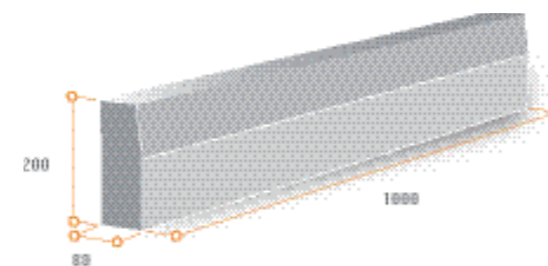
skošeni . sloped

PARKOVNI RUBNICI . park curbs

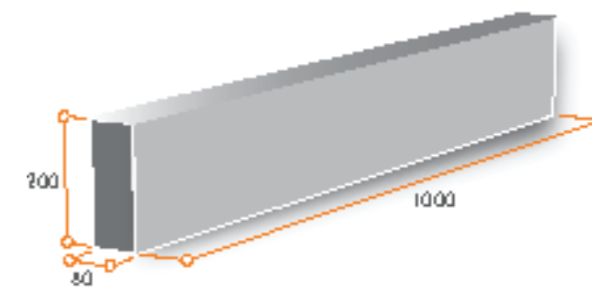
ravni i skošeni . at and sloped



Dimenzije mm dimensions mm	Težina kg weight kg	kom/paleta piece/pallet	kg/paleta kg/pallet	Izvedba shape
150/250/1000	77	20	1540	skošeni sloped
150/250/330	27	48	1300	skošeni sloped
180/240/1000	91	16	1456	skošeni sloped
180/240/300	30	48	1440	skošeni sloped



Dimenzije mm dimensions mm	Težina kg weight kg	kom/paleta piece/pallet	kg/paleta kg/pallet	Izvedba shape
80/200/1000	33	40	1320	skošeni sloped
80/200/500	16	96	1536	skošeni sloped

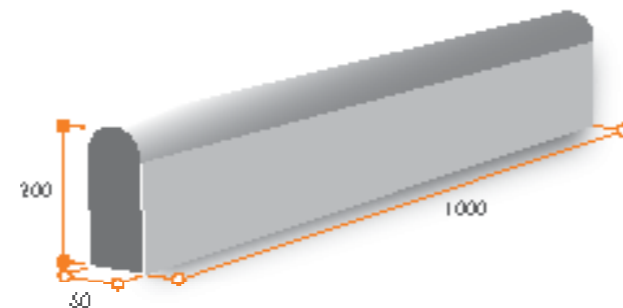
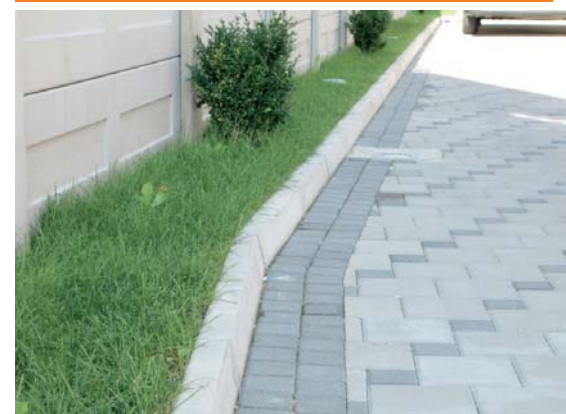


Dimenzije mm dimensions mm	Težina kg weight kg	kom/paleta piece/pallet	kg/paleta kg/pallet	Izvedba shape
80/200/1000	36	40	1440	ravni at
80/200/500	16,6	96	1594	ravni at



PARKOVNI RUBNICI
park curbs

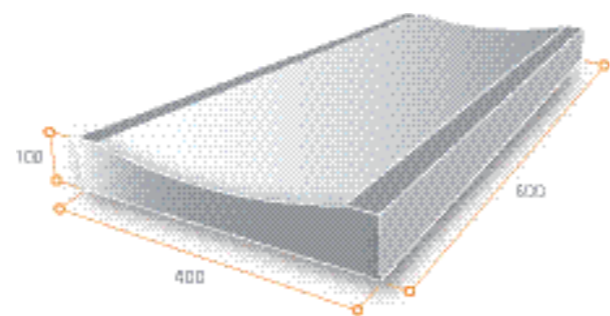
zaobljeni i ravni
rounded and flat



Dimenzije mm dimensions mm	Težina kg weight kg	kom/paleta piece/pallet	kg/paleta kg/pallet	Izvedba shape
50/200/1000	26	30	780	skošeni sloped



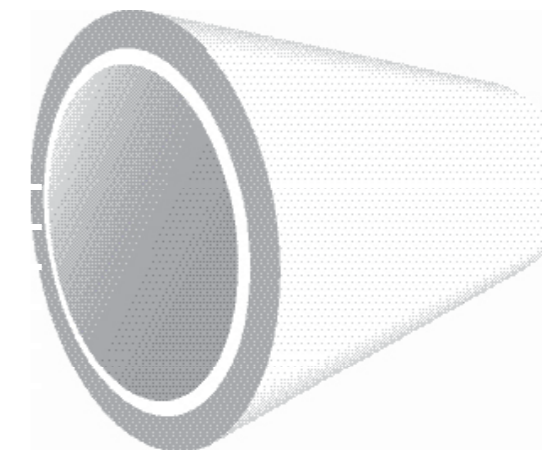
PLITKA KANALICA
shallow half round channel



Dimenzije mm dimensions mm	Težina kg weight kg	kom/paleta piece/pallet	kg/paleta kg/pallet
600/280/80	25	48	1200
600/400/100	48	30	1440
500/400/140	56	24	1344



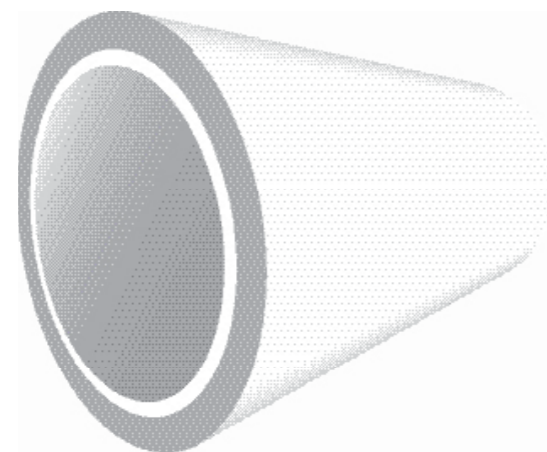
Dužina 500 mm length 500 mm	Težina kg weight kg
Ø 400/500	70
Ø 500/500	110
Ø 600/500	150
Ø 800/500	220
Ø 1000/500	285
Ø 1250/500	445



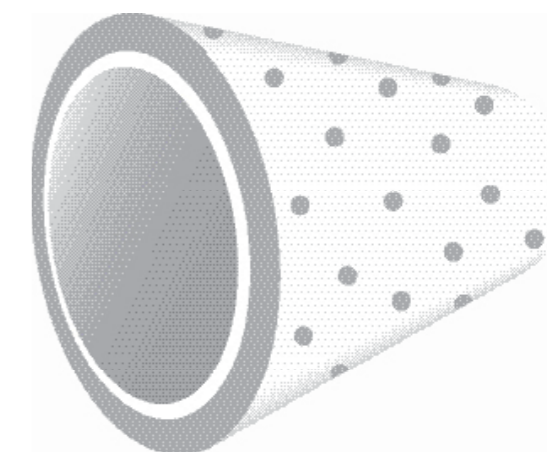
BETONSKE CIJEVI . concrete tubes

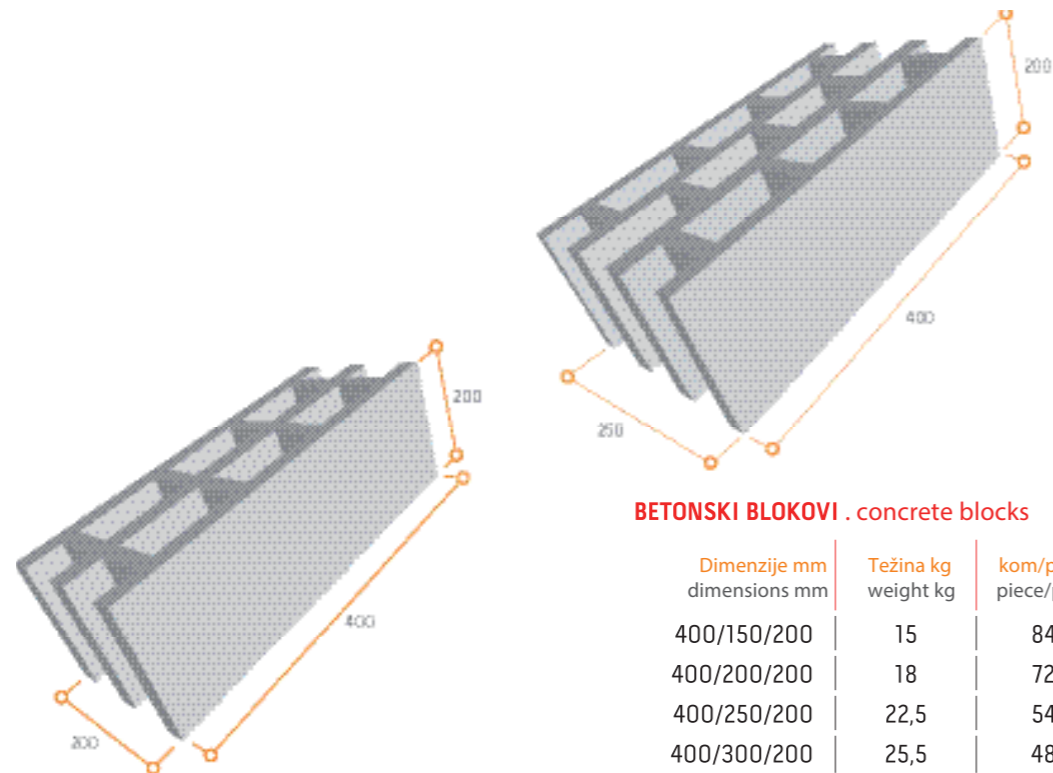
BETONSKE CIJEVI . concrete tubes

Dužina 500 mm length 500 mm	Težina kg weight kg
Ø 150/1000	35
Ø 200/1000	55
Ø 250/1000	80
Ø 300/1000	100
Ø 400/1000	140
Ø 500/1000	220
Ø 600/1000	300
Ø 800/1000	440
Ø 1000/1000	570
Ø 1250/1000	890



Dužina 1000 mm length 1000 mm	Težina kg weight kg
Ø 150/1000	35
Ø 200/1000	55
Ø 250/1000	80
Ø 300/1000	100
Ø 400/1000	135
Ø 500/1000	215
Ø 600/1000	297
Ø 800/1000	430
Ø 1000/1000	560
Ø 1250/1000	880

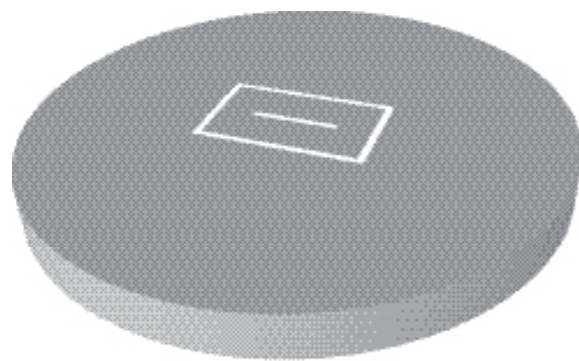


**BETONSKI BLOKOVI** . concrete blocks

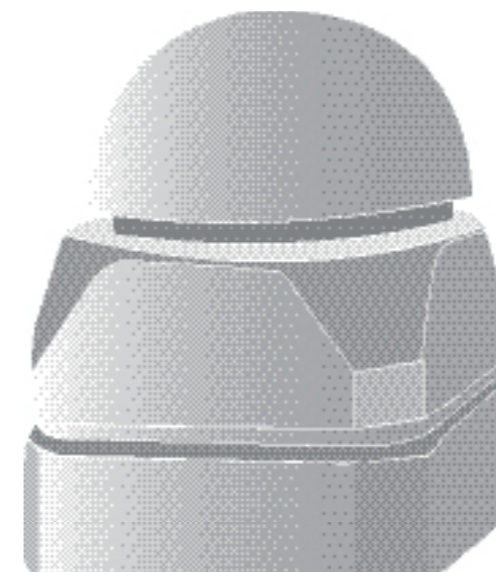
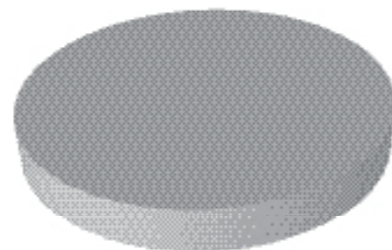
Dimenzije mm dimensions mm	Težina kg weight kg	kom/paleta piece/pallet	kg/paleta kg/pallet
400/150/200	15	84	1260
400/200/200	18	72	1296
400/250/200	22,5	54	1215
400/300/200	25,5	48	1224

BETONSKI BLOKOVI KUTNI . angle concrete blocks

Dimenzije mm dimensions mm	Težina kg weight kg	kom/paleta piece/pallet	kg/paleta kg/pallet
400/200/200	15	72	1080
400/250/200	18,2	48	874
400/300/200	23	48	1104

**POKLOPCI ŠAHTA . ARMIRANO BETONSKI**
reinforced concrete manhole covers

Dužina 500 mm length 500 mm	Težina kg weight kg	
Ø 300	6	
Ø 400	12	
Ø 500	20	
Ø 600	35	
Ø 800	135	s otvorom 400/400 with 400/400 slot
Ø 1000	190	s otvorom 400/400 with 400/400 slot
Ø 1250	380	s otvorom 400/400 with 400/400 slot

**PARKIRNE PREPREKE** sastoje se od 4 elementa
parking barriers, composed of 4 elements

Dimenzije mm dimensions mm	Okrugli dimenzije circular dimensions	Ø/V	
500/500/210		Ø/V	420/40
480/480/190	Polukugla dimenzije half bulb dimensions	Ø/V	480/300

VAŽNE UPUTE

JAMSTVA I REKLAMACIJE

Jamčimo za kvalitetu i kvantitetu proizvoda u okvirima važećih normi odnosno proizvođačkih deklaracija.

Sve eventualne reklamacije u pogledu kvalitete i kvantitete kupac je dužan prijaviti u roku od 15 dana od preuzimanja robe pismenim ili usmenim putem kako bi naša komisija izašla na lice mjesta i sa kupcem utvrdila činjenično stanje. Roba koju kupac reklamira ne smije biti ugrađena, već je kupac mora izdvojiti.

IZBIJANJA VAPNA I NIJANSE BOJA

Neznatne razlike u nijansama boje, te sitne razlike u strukturi, kao i vapnene mrlje nisu predmetom reklamacije jer ne utječu na kvalitetu proizvoda. Vapnene mrlje rezultat su kemijskog procesa, što se tehnički ne može izbjeći. Tijekom vremena vapnene mrlje na betonskim proizvodima nestaju. Postoje činbenici koji su uzrok promjene nijanse boja, jer boja cementa kod istog proizvođača uvijek nije adekvatna i ista pa su zato moguća određena odstupanja u nijansama boja.

PROMJENA BOJE

U pojedinim slučajevima, uslijed još nepoznatih vremenskih utjecaja iz okoliša, može doći do lakše promjene boje opločnika, prema žutoj odnosno smeđoj boji.

Pošto ne možemo utjecati na tu pojavu, ona nije osnova za reklamaciju.

POVRAT ROBE

Roba koja neće biti uredno zapakirana prilikom vraćanja iste od strane kupca neće biti preuzeta. Prilikom povrata robe kupac obavezno mora imati potvrdu o preuzimanja iste (otpremnicu) na kojoj su prikazani proizvodi s količinama.

Za elemente koji na originalnom pakiranju sadržavaju i pripadajuće polovice (npr. biskupske kape i sl.) ne postoji mogućnost zamjene istih za cijele elemente, kao i mogućnost povrata sredstava.

ISPORUKA ROBE

Uobičajeni rokovi isporuke robe su 7 - 14 radnih dana ukoliko nema robe na skladištu.

PALETE

Dio proizvoda betonske galanterije isporučuje se na euro paletama. Kupcu će se obračunati i euro palete, a ukoliko kupac vrati neoštećenu paletu, financijski odobravamo kupca za isti iznos.

IMPORTANT INSTRUCTIONS

WARRANTY AND COMPLAINTS

We guarantee quality and quantity of the product in terms of prevailing norms, manufacturing declaration.

For all possible complaints regarding the quality and quantity of the product the buyer is obliged to report within 15 days of receipt of goods in writing or in person so that our commission can, along with the buyer, establish the facts. The goods that the buyer wants to make reclamation of must not be installed, but the buyer must set it aside.

LIME OUTBREAK AND COLOR SHADES

Slight differences in shades of color or slight differences in the structure as well as lime stains are not reasons for reclamation because that does not affect the product quality. Lime strains are the result of chemical process that technically can not be avoid. Over time lime stains on concrete products disappear. There are factors that cause changes in shades of color because the same manufacturer does not always have the same color of cement. Therefore the variations in color shades are possible.

DISCOLORATION

In some cases, due to unknown environmental influences, concrete paver can become a bit yellowish or brownish.

Considering we can not affect this phenomenon it is considered not to be ground for complaint.

RETURN OF GOODS

Goods that will not be properly packed, in case of returning, will not be taken back. When returning the goods the buyer must have the dispatch on which products and quantities are displayed. Elements that contain corresponding half in the original packaging is not possible to replace for whole elements neither is possible to refund them.

SUPPLIES

Period of delivery of goods is usually between 7 and 14 work days, if there are no goods in storage.

PALLET

A part of concrete elements are delivered on euro pallets. Buyer will be charged euro pallets as well and if the buyer returns the pallet undamaged he will get financial return in amount of pallet.

BILJEŠKE
notes



povjerenje opravdano kvalitetom

ZAGORJE TEHNOBETON d.d.

Varaždin . Pavleka Miškine 49

T 042 350 937 . 404 430 . 351 405 F 042 305 938

E galanterija@gpzagorje.hr

W www.gpzagorje.hr